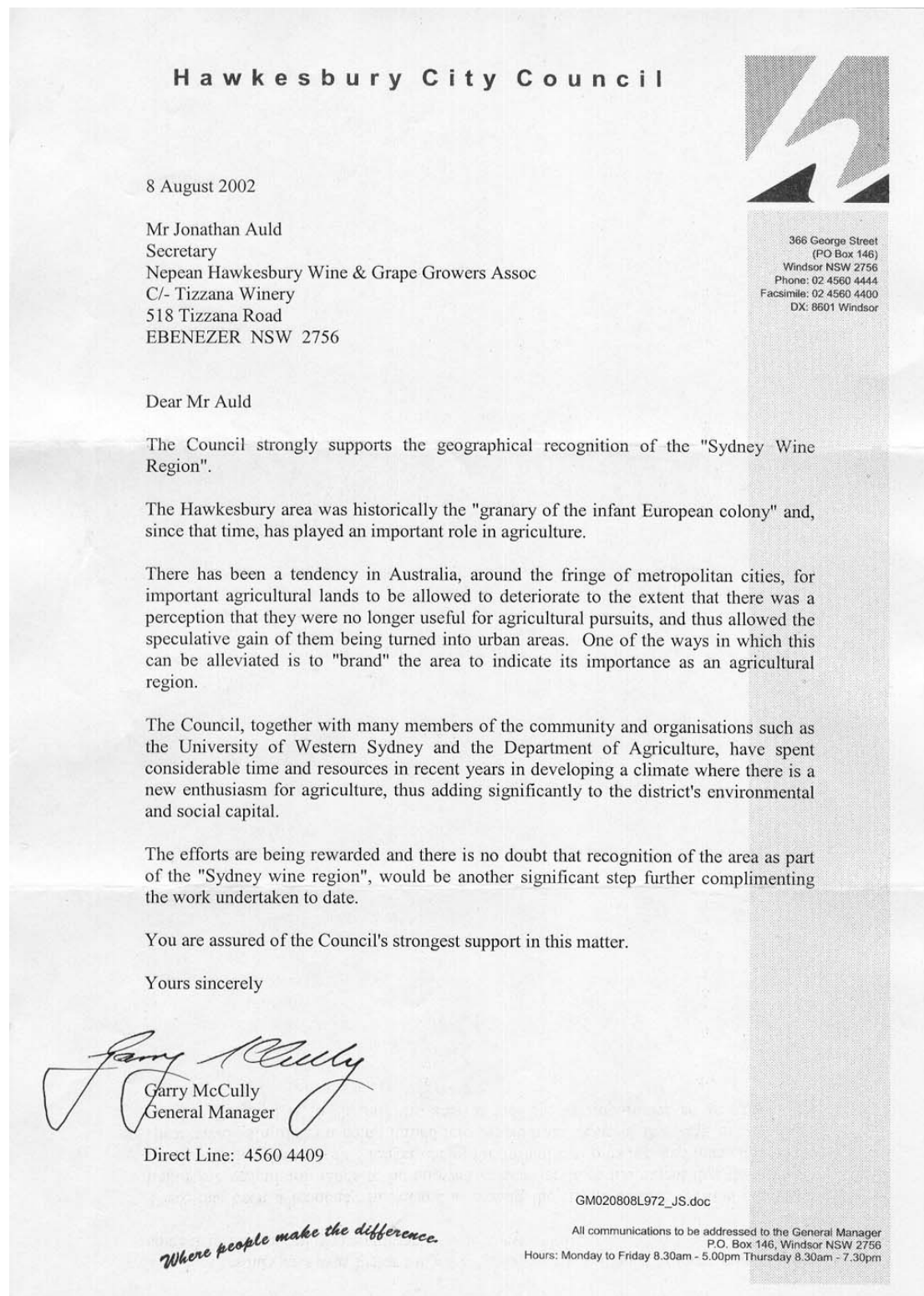


Appendix 4

Letters of support

Hawkesbury City Council



Kerry Bartlett, M.P. – Federal Member for Macquarie



Kerry Bartlett M.P.
Federal Member For Macquarie



Parliament of Australia
House of Representatives

9 August 2002

The Chairperson
Geographical Indications Committee
Australian Wine & Brandy Corporation
Industry House
Hackney Road (Cnr Botanic Road)
ADELAIDE SA 5000

Dear Sir/Madam

I write in support of an application from the Nepean Hawkesbury Wine & Grape Growers Association to you, for consideration of a geographic wine region for Sydney, ***Sydney Wine Region***.

The Association operates within my Federal electorate of Macquarie and the adjoining Federal seat of Lindsay and is highly thought of as an entrepreneurial and energetic body of industry. Its aim is to restore the wine industry in the Greater Sydney Region. The region has a long history in the industry and the wines produced are very well known and regarded.

The Sydney Basin has a number of unique geographical and climatic features which produce wines so different to those in other areas, thus warranting a separate classification. Further, the determination of Sydney as a distinct region would dovetail neatly with the expanding role of the University of Western Sydney in viticulture and winemaking and support for the wine industry.

It would be an excellent gesture in recognising the history and the aims of the Nepean Hawkesbury Wine and Grapegrowers Association. The title of ***Sydney Wine Region*** would have a positive and recognisable impact on agri-tourism for this state and the local region.

I commend the Application to you for worthy consideration.

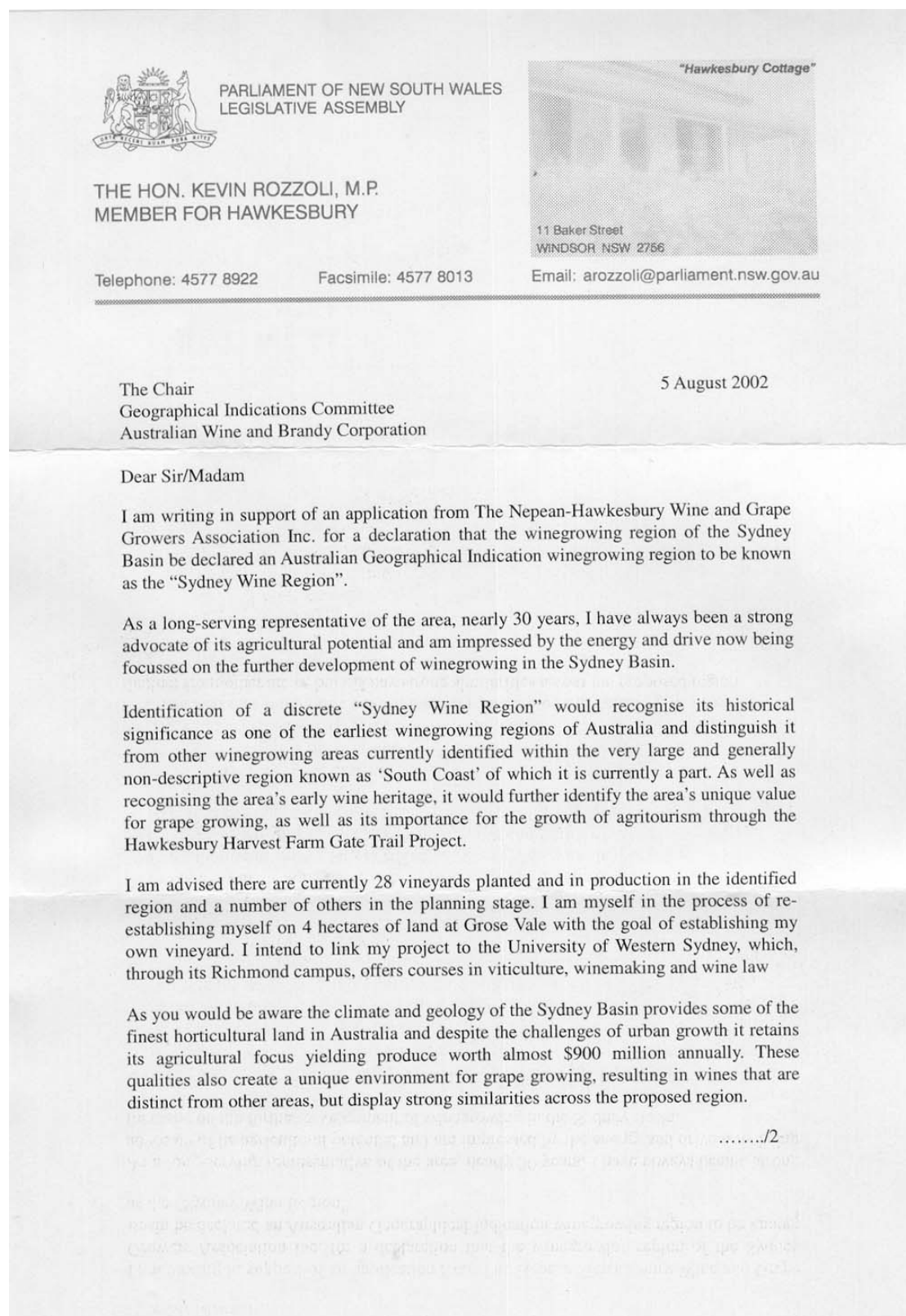
Yours sincerely

KERRY BARTLETT MP
Federal Member for Macquarie

Electorate Office: Suite 3, 186 Macquarie Rd Springwood NSW 2777
Correspondence: PO Box 376 Springwood NSW 2777
Email: kerrybartlett.mp@aph.gov.au

Tel: (02) 4751 7494 Fax: (02) 4751 7495
Toll Free 1800 810 050
Website: www.kerrybartlett.com

Kevin Rozzoli, M.P. – Member for Hawkesbury



Page 2

The Chair
Geographical Indications Committee
Australian Wine and Brandy Corporation

5 August 2002

Like most areas it is not without its growing problems. This has resulted in significant experimentation and new plantings with different grape varieties and trellising that, I am assured, will lead to vastly improved yields in the years to come and which will be important to maintaining the region's unique product.

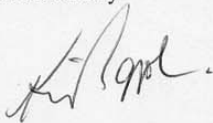
I am certain that winegrowing will expand in the coming years as local councils seek to further the State Government's policy of sustainable agriculture. Grapes are an ideal crop in terms of land suitability and water consumption. The gently undulating land means small vineyards can be scientifically located to realise maximum potential from growing conditions. Small vineyards working on a co-operative basis have proven successful, both in terms of the quality of product and financially, in many parts of the world.

Finally the Nepean-Hawkesbury region is an area of immense heritage value. The Nepean-Hawkesbury Wine and Grape Growers Association Inc. can play a major role in preserving the history of Australian winemaking and grapegrowing. Quite apart from the role it played in the very beginnings of the Australian industry through plantings at Sydney Cove, Ryde and Parramatta; the efforts of the Macarthur family at 'Camden Park' vineyard, Camden and Penrith are regarded as the first commercial plantings in New South Wales (c1817).

The Association's website presents one of the most powerful arguments for recognition of the Sydney Basin as an Australian Geographical Indication winegrowing region in its own right.

I strongly support its application and trust you will give it favourable consideration.

Yours faithfully



The Hon. Kevin Rozzoli MP
Member for Hawkesbury

University of Western Sydney - Hawkesbury



UWS Hawkesbury

Locked Bag#1, Richmond NSW 2753 Australia

To: The Nepean Hawkesbury Wine and Grapegrowers
Association
Geographical Indications Committee
5th August, 2002
Director of Wine Studies,
University of Western Sydney

I understand that you are putting together an application for a
"Sydney Wine Region" for the the Geographical Indications
Committee (GIC), on behalf of Statutory committee of the
Australian Wine and Brandy Corporation.
I would like to give my whole- hearted support for this important
application.
Our University see the identification of a "Sydney Wine Region"
as an important step in the recognition of the area's early wine
heritage, as well as highlighting the uniqueness of the area for
grape growing and its importance for growth in agritourism.
If I can help in anyway in your endeavours please contact me

Yours Sincerely
Professor Geoffrey Skurray

A handwritten signature in black ink, appearing to read 'Geo Skurray', written over a horizontal line.

Richmond Campus
Bourke Street
Richmond NSW
Telephone: +61-2-4570 1333

Blacktown Campus
Eastern Road
Quakers Hill NSW
Telephone: +61-2-9852 4000

Internet Home Page
<http://www.hawkesbury.uws.edu.au>

A Member of the
University of Western Sydney
with UWS Nepean and
UWS Macarthur

UWS Chancellery
Great Western Highway
Werrington NSW
Telephone: +61-2-9678 7800

Hawkesbury Harvest



TO WHOM IT MAY CONCERN

On behalf of Hawkesbury Harvest Inc. I wish to support the Nepean Hawkesbury Wine & Grape Growers Association Inc. in its quest to achieve status as a distinct wine growing region in the Sydney Basin to be known as the 'Sydney Wine Region'.

Hawkesbury Harvest is community based project aimed at improving the economic sustainability of local agriculture in the Hawkesbury River Catchment of the Sydney Basin. Hawkesbury Harvest is providing people who live on or own small farms in the catchment with a number of marketing options. Two that have proven to be successful are the Farm Gate Trail which is agri-tourism based and Farmers Markets. Hawkesbury Harvest has 34 trail destinations on its current Farm Gate Trail map. The inaugural Hawkesbury Harvest Farmer's Market was held at Castle Hill Showground on Saturday 10 August 2002. At least 6000 people attended and it was a huge success. The next program for the organisation will be to market local produce and value added products under the Hawkesbury Harvest brand.

Hawkesbury Harvest is demonstrating that there is a huge demand in the community for the local goods and services it is developing. The proposal by the Nepean Hawkesbury Wine & Grape Growers Association Inc. to establish the 'Sydney Wine Region' will provide the potential for the wine growers in the Basin to take advantage of that demand. There is much to be gained.

Yours faithfully

David Mason
Chair
Hawkesbury Harvest
Ph 45 770652

The Evans Wine Company



THE

EVANS WINE COMPANY

PTY. LTD.



ABN 51 074 841 491

Postal Address: P.O. Box 452, Maitland, New South Wales, 2320.

Telephone (02) 4930 1999 Facsimile (02) 4930 1988 Email: ttwines@turboweb.net.au

**The Secretary,
Nepean & Hawkesbury Wine & Grape Growers
Association Inc.,
518 Tizzana Road
EBENEZER NSW 2756.**

Dear Sir,

"SYDNEY REGIONAL G.I.C. SUBMISSION"

This company wholeheartedly supports the above submission for the inclusion of "Sydney" in the list of Australian Geographic placenames.

We support the application in its general terms, but particularly as

- (1) It very clearly defines the discrete and homogenous character of the region.***
- (2) The proposed region represents the birthplace of the Australian Wine Industry.***
- (3) The name requires protection from "passing-off".***
- (4) The number of small vineyards planted recently in the region is sympathetic to the history of the proposed G.I.C.***

As the leasee of the Camden Park vineyard and viticultural managers of the Nangarin vineyard development, we will enthusiastically use the "Sydney" region as part of our labeling policy.

Yours Faithfully,

**Denis Power.
Director.**

August 21, 2002

Tourism Hawkesbury Inc.



◆ YOU GET MORE OUT OF LIFE, OUT OF TOWN ◆

Jonathon Auld
Secretary
Nepean Hawkesbury Wine and Grape Growers Association
C/o 518 Tizzana Rd
Ebenezer NSW 2756
5th August 2002

Dear Jonathon,

On behalf of Tourism Hawkesbury Inc, I am writing to support your application for determination of a geographic wine region for Sydney.

Tourism Hawkesbury Inc. operates the peak tourist association within the Hawkesbury Local Government Area. As an organization, we are committed to the promotion and marketing of the region as an area that has strong foundations in the preservation of agriculture and history.

A primary focus for our region is in the successful development of a number of agri-tourism initiatives. The appeal of the Hawkesbury and surrounding districts is in the ability to promote to visitors, a region where they can share in the unique heritage and environmental aspects found here.

We support the application for the determination of a geographic wine region for Sydney as it creates a wonderful tourism product for visitors to enjoy.

Please do not hesitate to contact me should you have any questions or require further information. I am available on 45 885 895.

Yours Sincerely,

Karina Groth
Tourism Manager

Tourism Hawkesbury Inc ABN: 18 935 849 066
PO Box 5534, South Windsor, NSW 2756
Internet: <http://www.hawkesburyvalley.com>

Office: Ham Common, Bicentenary Park, Windsor St, Clarendon
Phone: (02) 4588 5895 Fax: (02) 4588 5896
Email: enquiries@hawkesburyvalley.com